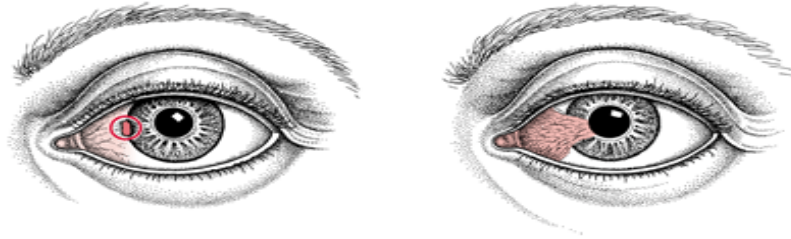


Pterygium



What is pterygium?

A pterygium is a non-cancerous growth of the clear, thin tissue (conjunctiva) that lays over the white part of the eye (sclera). One or both eyes may be involved.

Symptoms: The main symptom of a pterygium is a painless area of raised white tissue, with blood vessels on the inner or outer edge of the cornea. Sometimes it may become inflamed and cause burning, irritation, or a feeling like there's something foreign in the eye.

Signs and tests: A physical examination of the eyes and eyelids confirms the diagnosis. Special tests are **usually not needed**.

Treatment: No treatment is needed unless the pterygium begins to block vision or causes symptoms that are hard to control. Then it should be removed with surgery. Wear protective glasses and a hat with a brim to prevent the condition from returning.