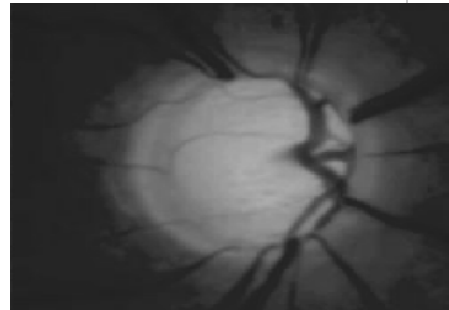
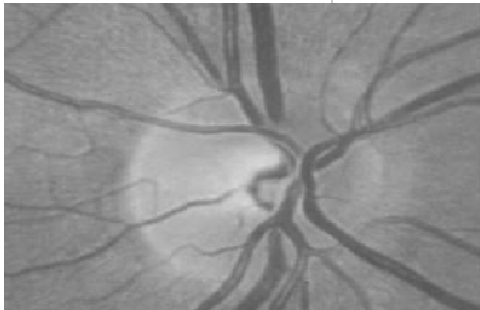


Glaucoma

Normal Optic Nerve vs. Enlarged Optic Nerve



During today's visit Doctor found that the patient's optic nerve was enlarged, the pressure inside the eye was high or you have a family history of glaucoma.

These tests are done to see if the patient's enlarged optic nerve has begun to affect their vision. Normally Glaucoma is a disease of older people.

HRT Testing: A test in which the doctor uses a special laser to take multiple 3-dimensional photographs of the optic nerve and surrounding retina. This laser will NOT harm the eye.

Visual Field: A visual field test produces a map of your complete field of vision which is affected if you have Glaucoma. During this test, you will be asked to look straight ahead and then press a buzzer when a moving light passes your peripheral (or side) vision.

Pachymetry: A simple probe placed on the front of the eye to measure the thickness of your cornea. Thicker cornea protects against high pressures in eyes.

Dr. Gupta would like for the patient to come back and have base line testing done to ensure that optic nerve is big since birth and adjusted pressures are normal and not due to Glaucoma.